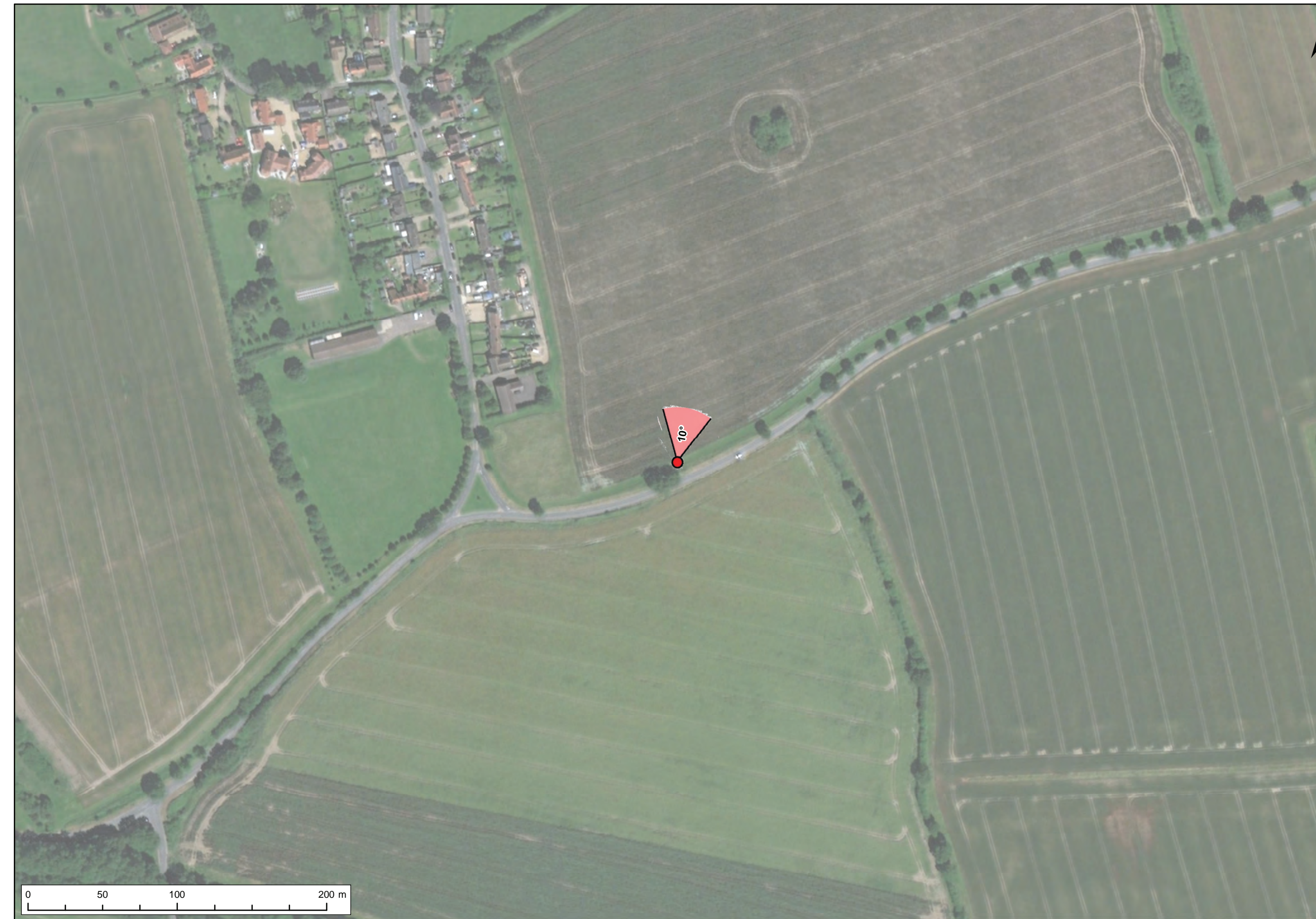
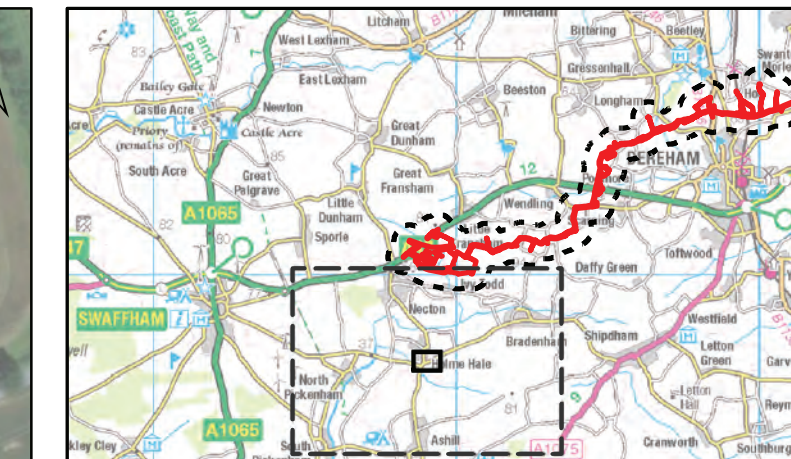


Viewpoint Location Plan Baseline Panorama (90 Degree View)  
Scale: 1:25,000



Viewpoint Location Plan (53.5 Degree View)  
Scale: 1:2,500



Legend:

- Norfolk Boreas onshore red line boundary
- Study area 500m
- Onshore project substation**
- Onshore project substation
- National Grid**
- National Grid substation extension
- National Grid new / replacement OHL tower search area
- Existing substation locations**
- Dudgeon substation
- Necton National Grid substation
- Viewpoint**
- 90 degree field of view viewpoint
- 53.5 degree field of view viewpoint

Project:	Report:
Norfolk Boreas	Environmental Statement

Title:	Scenario 2 Viewpoint 10: Holme Hale
--------	---

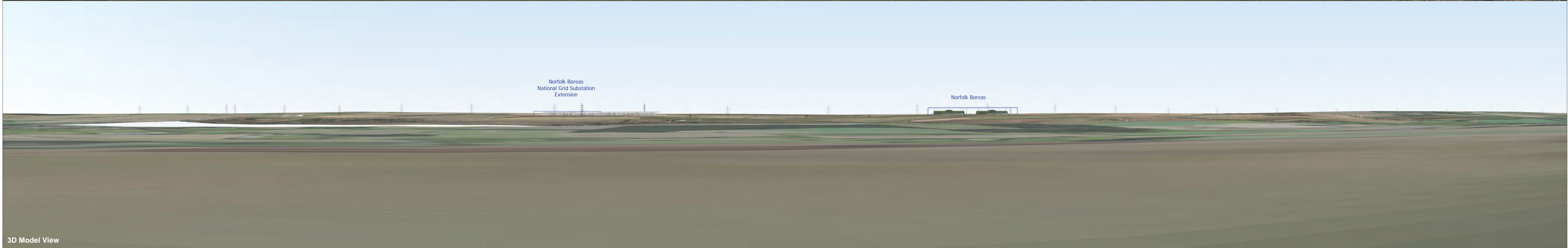
Figure: 29.44a	Drawing No: PB5640-005-029-044				
Revision:	Date:	Drawn:	Checked:	Size:	Scale:
01	14/02/2019	LA	JP	A3	Multiple
02	21/02/2019	LA	JP	A3	Multiple

Co-ordinate system: British National Grid EPSG: 27700

© Vattenfall Wind Power Ltd 2019.  
© Crown copyright and database rights 2019 Ordnance Survey 0100031673  
Source: Esri, DigitalGlobe, GeoEye, Earthstar Geographics, CNES/Airbus DS, USDA, USGS, AeroGRID, IGN, and the GIS User Community







OS reference: 589033 E 307147 N  
 Eye level: 65.1 m AOD  
 Direction of view: 10°  
 Nearest substation: 3.29 km

Horizontal field of view: 90° (cylindrical projection)  
 Principal viewing distance: 522 mm

Camera: Canon EOS 5D Mark II  
 Lens: 50mm (Canon EF 50mm f/1.4)  
 Camera height: 1.5 m AGL  
 Date and time: 25/01/2018, 13:15:49

Scenario 2  
 Figure: 29.44b  
 Viewpoint 10: Holme Hale





Photomontage of the proposed Norfolk Boreas HVDC Substation with the National Grid Substation Extension

View flat at a comfortable arm's length

<b>OS reference:</b>	589033 E 307147 N	<b>Horizontal field of view:</b>	53.5° (planar projection)	<b>Camera:</b>	Canon EOS 5D Mark II
<b>Eye level:</b>	65.1 m AOD	<b>Principal viewing distance:</b>	812.5 mm	<b>Lens:</b>	50mm (Canon EF 50mm f/1.4)
<b>Direction of view:</b>	10°	<b>Paper size:</b>	841 x 297 mm (half A1)	<b>Camera height:</b>	1.5 m AGL
<b>Nearest substation:</b>	3.29 km	<b>Correct printed image size:</b>	820 x 260 mm	<b>Date and time:</b>	25/01/2018, 13:15:49

**Scenario 2**  
**Figure: 29.44c**  
**Viewpoint 10: Holme Hale**





Norfolk Boreas  
National Grid Substation Extension

Norfolk Boreas

Photomontage of the proposed Norfolk Boreas HVDC Substation and National Grid Substation Extension and mitigation planting (15 years growth)

View flat at a comfortable arm's length

<b>OS reference:</b>	589033 E 307147 N	<b>Horizontal field of view:</b>	53.5° (planar projection)	<b>Camera:</b>	Canon EOS 5D Mark II
<b>Eye level:</b>	65.1 m AOD	<b>Principal viewing distance:</b>	812.5 mm	<b>Lens:</b>	50mm (Canon EF 50mm f/1.4)
<b>Direction of view:</b>	10°	<b>Paper size:</b>	841 x 297 mm (half A1)	<b>Camera height:</b>	1.5 m AGL
<b>Nearest substation:</b>	3.29 km	<b>Correct printed image size:</b>	820 x 260 mm	<b>Date and time:</b>	25/01/2018, 13:15:49